

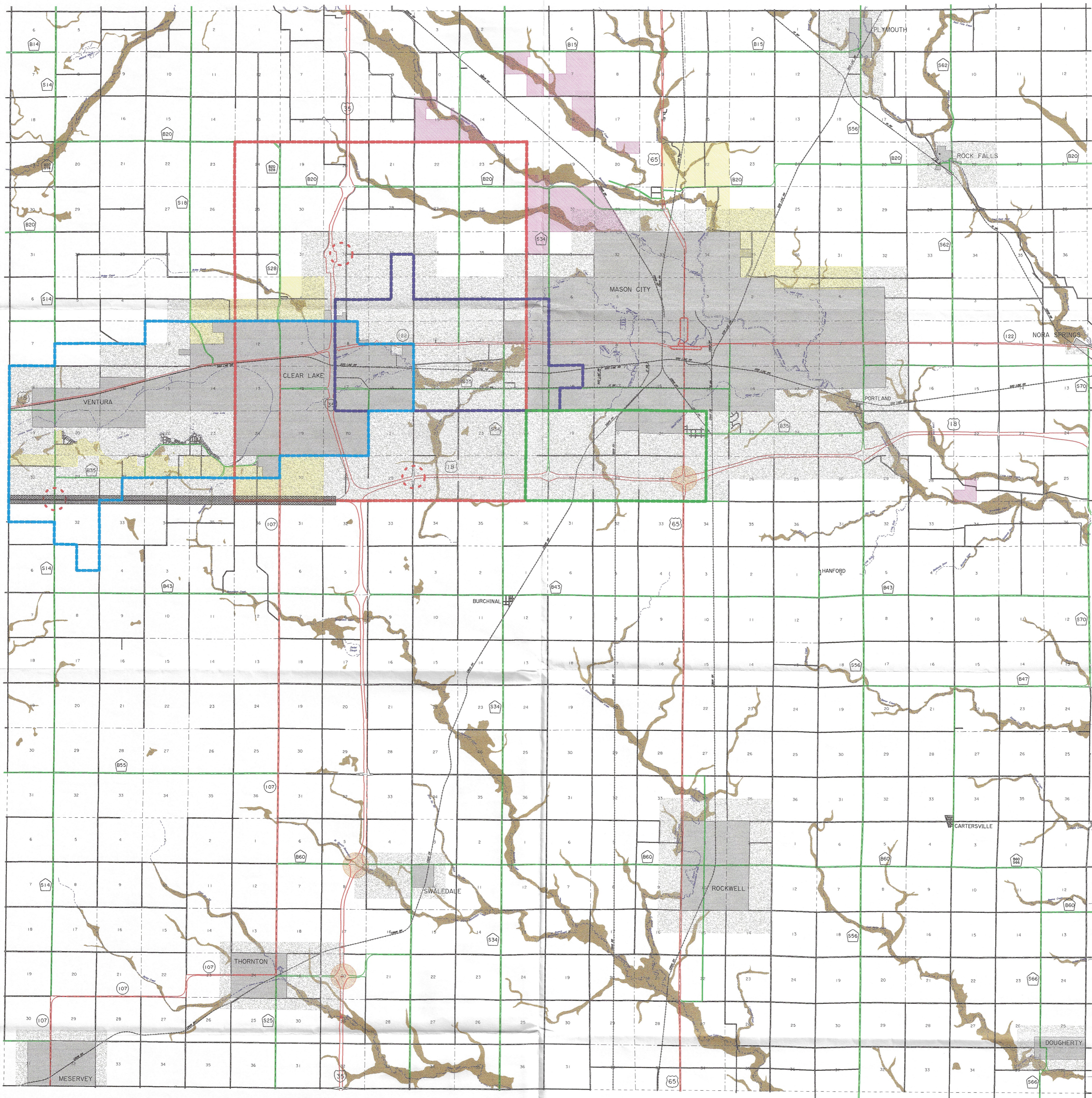
Comprehensive Development Plan - Cerro Gordo County, Iowa

Map Legend

Existing Land Use/July 2003

Transportation Plan

<p>Agriculture Areas</p> <ul style="list-style-type: none"> A-1 Agriculture A-1 Agriculture/Residence A-1 Agriculture/Illegal A-2 Agriculture Residence <p>Residential Areas</p> <ul style="list-style-type: none"> R-1 Single-Family Residential R-2 Single-Family Residential R-3 Single-Family Residential R-4 Multi-Family Residential <p>Commercial Areas</p> <ul style="list-style-type: none"> C-1 Local Commercial C-2 General Commercial C-3 Planned Shopping Center 	<p>Industrial Areas</p> <ul style="list-style-type: none"> M-1 Light Industrial M-2 Heavy Industrial <p>Planned Areas</p> <ul style="list-style-type: none"> Planned Area Development <p>Flood Plains</p> <p>Mining Areas</p> <p>Cemeteries</p> <p>Incorporated Cities</p>	<p>Public Areas</p> <p>Includes: Parks, Wildlife Areas, Campgrounds, Bike Trails</p> <p>Semi-Public Areas</p> <p>Includes: Golf Courses, Museums, Gun Clubs, Campgrounds</p> <p>Public Services</p> <p>Includes: Wastewater Treatment Facilities, Pipeline and Energy Substations, Landfill, Wind Farm, Airport, Power Plants</p> <p><small>NOTE: For specific Zoning District Classifications, see official Zoning District Maps in Office of Cerro Gordo County Planning & Zoning.</small></p>	<p>County Highway</p> <p>State Highway</p> <p>U.S. Highway</p> <p>Local Access Interchange</p> <p>Non-Local Access Interchange</p>
---	---	---	---



Comprehensive Development Plan - Cerro Gordo County, Iowa

Map Legend

Future Land Use/July 2003

Transportation Plan

<p>Agriculture Areas</p> <ul style="list-style-type: none"> A-1 Agriculture A-1 Agriculture/Residence A-1 Agriculture/Illegal A-2 Agriculture Residence <p>Residential Areas</p> <ul style="list-style-type: none"> R-1 Single-Family Residential R-2 Single-Family Residential R-3 Single-Family Residential R-4 Multi-Family Residential <p>Commercial Areas</p> <ul style="list-style-type: none"> C-1 Local Commercial C-2 General Commercial C-3 Planned Shopping Center 	<p>Industrial Areas</p> <ul style="list-style-type: none"> M-1 Light Industrial M-2 Heavy Industrial <p>(Locations for Future Industrial Development are not shown, but may be acceptable as determined to be appropriate by the Planning and Zoning Commission)</p> <p>Planned Areas</p> <ul style="list-style-type: none"> Planned Area Development <p>Mining Areas</p> <p>Flood Plains</p>	<p>Incorporated Cities</p> <p>Coordination/Cooperation Areas</p> <p>Joint Development Area</p> <p>Airport Land Use and Zoning</p> <p>Land Use Study/South of Mason City</p> <p>Environmental Resource Overlay District</p>	<p>County Highway</p> <p>State Highway</p> <p>U.S. Highway</p> <p>Future Freeway</p> <p>Future Local Access Interchange</p>	<p>NOTE: Developed Areas are shown on the Existing Land Use Map</p>
---	--	--	--	--