



Board of Supervisors Cerro Gordo County Courthouse

220 North Washington Avenue
Mason City, IA 50401-3254
<https://cerrogordo.gov/supervisors/>

Chris Watts
Casey M. Callanan
Carl M. Ginapp

CERRO GORDO COUNTY BOARD OF SUPERVISORS REGULAR SESSION

**MONDAY, SEPTEMBER 29, 2025
10:00 A.M. – BOARDROOM**

APPROVAL OF AGENDA

APPROVAL OF MINUTES

A. September 22, 2025 Regular Session

PUBLIC COMMENT – Agenda Items Only

NEW BUSINESS

1. County Auditor - Claims
2. County Auditor – Payroll
3. County Auditor – Drainage
4. County Auditor – Drainage – Resolution to Order Drainage District Assessments
5. County Auditor – 10:05 a.m. Drainage District 1 Main Tile Repair – Continued Completion Hearing
 - a. Consider Acceptance of Work
 - b. Consider Payment of Damages to Landowners
 - c. Consider Pay Application #3 – Wunsch Construction
6. County Engineer –
7. Consider Reports from the Environmental Health Service Manager concerning the Manure Management Plan Update for River Edge Farms LLC #69070 and order that the report be forwarded to the Department of Natural Resources

CORRESPONDENCE

ANNOUNCEMENTS

ADJOURNMENT

Next Resolution 2025-58

Posted: 09/25/25 at 10:00 a.m.

All times listed on the agenda, except the starting time, are tentative.

Cerro Gordo County strives to ensure that its programs and activities do not discriminate on the basis of race, color, national origin, sex, age, or disability. Persons requiring assistance, auxiliary aids or services, or accommodation because of a disability may contact the county's ADA coordinator at (641) 421-3075. If you are hearing impaired, call Relay Iowa TTY at 1-800-735-2942.

RESOLUTION
2025-58

WHEREAS, the following payroll change requests were submitted to the Board of Supervisors for review; and,

WHEREAS, the Board of Supervisors of Cerro Gordo County, has reviewed and considered the change requests as follows:

<u>Department</u>	<u>Name</u>	<u>Pay Change</u>	<u>Effective Date</u>
Sheriff	Adam Montgomery	\$24.96	09/30/2025
Sheriff	Benjamin Buck	\$28.41	09/30/2025

THEREFORE, BE IT RESOLVED, that the Board of Supervisors of Cerro Gordo County does hereby approve the requests as shown above and directs the Auditor to make the necessary adjustments to the payroll.

Resolution declared adopted this 29th day of September, 2025

AYES: Callanan, Ginapp, Watts

NAYS: None

ABSENT/NOT VOTING: None

Chris Watts, Chairperson
Board of Supervisors

ATTEST:

Bob Peshak
Deputy Auditor

RESOLUTION

2025 - 59

RESOLUTION TO LEVY ASSESSMENTS FOR DRAINAGE DISTRICTS

The Board of Supervisors of Cerro Gordo County acting for and on behalf of the drainage districts below FINDS:

1. There are insufficient funds in the drainage district accounts to pay for necessary repairs and maintenance and to provide for a sinking fund to pay future maintenance and repair costs in accordance with §468.61.
2. The drainage districts have incurred or shortly will incur costs for repair and maintenance.

NOW, THEREFORE, BE IT RESOLVED as follows: Assessments in the following amounts shall be and are assessed against each individual tract of land and highway within the following Drainage Districts and Laterals in accordance with the classification schedules on file in the drainage district records in the office of the County Auditor. In accordance with §468.57, if the owner of any land against which a levy exceeding \$500.00 is made shall within thirty (30) days from the effective date of this Resolution agree in writing that in consideration of having a right to pay his assessment in ten (10) equal installments, he will not make any objection to the legality of his assessment or the levy of taxes against his property, such owner shall have the right to pay the assessment in ten (10) equal installments. Interest shall accrue on the unpaid assessment at the rate of 6% per annum as provided by law.

PROPOSED ASSESSMENT AMOUNTS

• Drainage District 30	\$500
• Drainage District 1-31-86 Lateral 1 Upper Tile (minor system)	\$22,000
• Drainage District 1-31-86 Lateral 1-O (minor system)	\$16,750
• Drainage District 1-31-86 Lateral 1-L (minor system)	\$6,500
• Drainage District 1-31-85 Lateral 1 Lower (major system)	\$6,000
• Drainage District 33 Main Tile	\$1,000
• Drainage District 35	\$62,500
• Drainage District 36	\$4,500
• Drainage District 6-56 Lateral 2-A	\$1,500
• Drainage District 6-56 Lateral 2-A1A	\$2,500
• Drainage District 6-56 Lateral 2-C	\$500
• Drainage District 57	\$169,000
• Drainage District 71	\$2,000
• Drainage District 101	\$1,500
• Drainage District 110	\$11,000

1. The effective date of these assessments is the 29th day of September, 2025.

Vote being taken on the above Resolution resulted as follows:

Ayes:

Nays: None

Absent: None

Resolution declared adopted this 29th day of September, 2025.

Chris Watts, Chairperson
Board of Supervisors

ATTEST:

Bob Peshak
Deputy Auditor



Real People. Real Solutions.

1609 US Hwy 18 East
Algona, IA 50511

Phone: (515) 395-3140
Bolton-Menk.com

July 3, 2025

Cerro Gordo County Board of Supervisors
Cerro Gordo County Courthouse
220 N Washington Ave.
Mason City, Iowa 50401

RE: Certification of Contract Completion
Wunsch Construction
Main Tile Repair
Drainage District No. 1
Project No.: OT7.131386

Dear Cerro Gordo County Board of Supervisors, acting as Trustees of Drainage District No. 1:

I hereby certify that the contract with Wunsch Construction, Inc., for the Main Tile Repair in Drainage District No. 1, commencing in September 2024, has been completed in substantial compliance with the plans and specifications. A completion report is attached. This certification is intended to satisfy the requirements of Iowa Code Section 468.101.

A date for the completion hearing will need to be set by the Board in accordance with Iowa Code Section 468.101. Notice should be made by publication and to the individual owners of land on which the work was performed at least 10 days prior to the hearing. The Completion Report and estimate of Crop Damages and Map should be included in the notice to allow for landowner review prior to the hearing.

Sincerely,

Bolton & Menk, Inc.

Tyler A. Conley, P.E.
Project Manager

TAC/pnt

Encl: Completion Report
Crop Damages Spreadsheet and Map



Real People. Real Solutions.

1609 US Hwy 18 East
Algona, IA 50511

Ph: (515) 395-3140
Bolton-Menk.com

Completion Report

Main Tile Repair
Drainage District No. 1
Cerro Gordo County, Iowa
BMI Project No. OT7.131386

Contract Summary

- 1) Bids received on July 25, 2024
- 2) Contract awarded to Wunsch Construction, Inc. ----- \$ 276,146.00
- 3) High bid was ----- \$ 399,975.00
- 4) Engineer's Report Construction Cost Estimate ----- \$ 241,990.00
- 5) Work commenced in September 2024
- 6) Work was substantially completed on May 2, 2025
- 7) Construction Costs:

	Total
Original Contract Price	\$ 276,146.00
Change Order No. 1 Root cutting of 1,350 LF of existing 24" HDPE Tile	\$ 54,000.00
Change Order No. 2 Time extension for substantial project completion	\$ 0.00
Change Order No. 3 Rectification/Cancellation of item number CO1-113	\$ - 54,000.00
Change Order No. 4 Bike Trail rock resurfacing	\$ 184.92
Change Order No. 5 Root cutting repairs and Rectify actual quantities with contract quantities	\$ 116.42
Total Completed Work	\$ 276,447.34
Total Amount Paid to Date	\$ <u>248,802.61</u>
Total Amount Due to Contractor	\$ 27,644.73



Real People. Real Solutions.

1609 US Hwy 18 East
Algona, IA 50511

Ph: (515) 395-3140
Bolton-Menk.com

Damages

- Landowners are eligible for damages resulting from the work on their land.
- The contractors work limits as measured by the GPS were used for the area calculation of crop damages. The dollar amount per acre was based on rounded approximations of recent crop prices and yield averages. The calculated areas and damages are shown on the attached spreadsheet. Disagreements with the calculated amounts must be made to the Auditor at or before the time of hearing to be considered by the Board.
- Any additional objections or other claims for damages must be made to the Auditor at or before the time of hearing to be considered by the Board. Landowners must submit receipts detailing the cost of repairing damaged areas to the Auditor to be accepted. Damages, including dollar amounts, can be adjusted by the Board at the time of the hearing.
- Wunsch Construction, Inc., can be made to return and repair anything that fails because of their workmanship. However, the Drainage District will need to pay the contractor the bid price for any work not found to be because of their negligence.

Next Steps at Report Filing

- 1) Set a date and time for the completion hearing

Next Steps at Completion Hearing

- 1) Board considers acceptance of the work.
- 2) Board considers payment of damages to landowners.
- 3) Board considers Pay Application No. 3 – Final for payment of retainage and directs the Auditor to make final payment thirty (30) days after the Board's acceptance of the work.

Sincerely,
Bolton & Menk, Inc.

Tyler A. Conley, P.E.
Project Manager

TAC/pnt

PROPOSED DAMAGES
MAIN TILE REPAIR
DRAINAGE DISTRICT NO. 1
CERRO GORDO COUNTY, IOWA

PROPOSED CONSTRUCTION DAMAGES

	\$ PER ACRE
BEANS (HARVESTED)	\$0.00
CRP/BUFFER	\$300.00

PROPOSED FUTURE DAMAGES

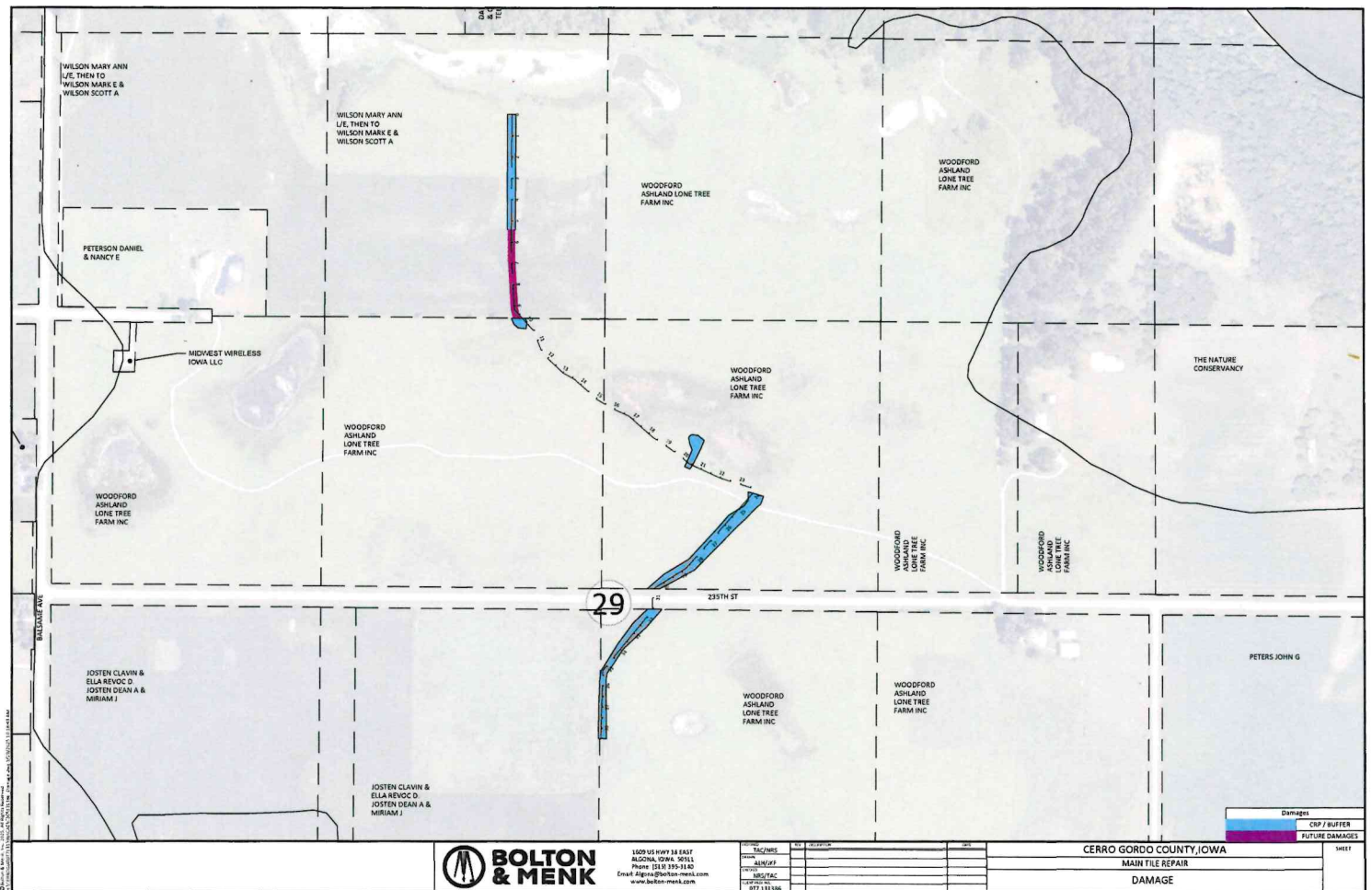
Area = Pipe length X 30' Width

	\$ PER ACRE
	\$770.00

LANDOWNER (TENANT)	CROP FARMED	PARCEL NUMBER	SEC-TWP- RNG	LEGAL DESCRIPTION	CONSTRUCTION DAMAGE AREA (Acres)	CONSTRUCTION DAMAGE (Dollars)	FUTURE DAMAGE AREA (Acres)	FUTURE DAMAGE (Dollars)	TOTAL DAMAGE (Dollars)
WILSON, MARK E	CRP / BUFFER	052910000300	29-26-22	NE NW 29-96-22	0.60	\$180.00	0.00	\$0.00	
	BEANS (HARVESTED)	052910000500	29-26-22	SE NW 29-96-22	0.29	\$0.00	0.29	\$223.30	
TOTALS					0.89	\$180.00	0.29	\$223.30	\$403.30

WOODFORD ASHLAND LONE TREE FARM INC	CRP / BUFFER	052910000500	29-26-22	SE NW 29-96-22	0.06	\$18.00	0.00	\$0.00	
	CRP / BUFFER	052920000300	29-26-22	SW NE 29-96-22	0.75	\$225.00	0.00	\$0.00	
	CRP / BUFFER	052940000100	29-26-22	NW SE 29-96-22	0.55	\$165.00	0.00	\$0.00	
TOTALS					1.36	\$408.00	0.00	\$0.00	\$408.00

	CONSTRUCTION DAMAGE AREA (Acres)	CONSTRUCTION DAMAGE (Dollars)	FUTURE DAMAGE AREA (Acres)	FUTURE DAMAGE (Dollars)	TOTAL DAMAGE (Dollars)
TOTAL:	2.25	\$588.00	0.29	\$223.30	\$811.30



July 28, 2025



Adam Wedmore
Cerro Gordo County Auditor

Cerro Gordo Board of Supervisors
220 N. Washington Ave.
Mason City, IA 50401

Re: Drainage District 1 completion hearing.

Dear Adam and Supervisors,

I am one of the owners of Woodford Ashland Lone tree Farm, Inc., which owns two parcels that the Drainage District did some repairs on. Both parcels are enrolled in WRP/WRS subject to certain requirements to maintain the property according USDA and NRCS guidelines. Both properties were placed in the WRP to help with the restoration of Clear Lake's water quality. The NRCS is requiring us to replant 3.2 acres of damaged prairie, and I have attached an itemized list of our best estimate of the costs to repair the prairie.

We object to the Supervisors' acceptance of the completion of the contract for this work. Our property has been damaged by the contractor's work. We now have a pond on our property that has never existed before and the ditch abutting our property is full of water and won't drain. I talked with the engineer hired to oversee this project and he agrees this pond should be dealt with and the cause found. He has asked the contractor to come back and

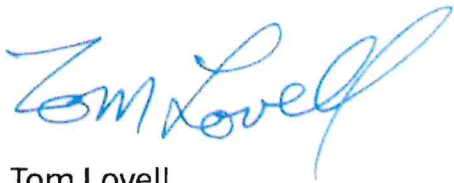
reconnect tiles that were not reconnected to the new tile line and also place an intake in the ditch that was removed.

I do understand that we have had a very rainy growing season which has made it more difficult to make these repairs. However, there was at least three weeks of good weather for the contractor to make these repairs after he was notified of the problem. The contractor has failed to make these repairs despite repeated requests by the engineer from Bolton & Menk. Because of the contractor's failure to complete the work in a timely manner, we have not been able to completely satisfy the restoration requirements of the NRCS.

If the work is not completed by August 11, 2025, I request that the Board of Supervisors continue the hearing and not close out the contract until the contractor determines the cause of our flooded field and repairs it. I believe this is the stance of Bolton & Menk as well.

Thank you for your consideration,

Sincerely,

A handwritten signature in blue ink that reads "Tom Lovell". The signature is fluid and cursive, with the first name "Tom" and last name "Lovell" clearly distinguishable.

Tom Lovell
545 N Shore Drive
Clear Lake, IA 50428

Woodford Ashland Lone Tree Farm, Inc.
Expenses to restore Prairie from
Drainage District 1
Repairs

FILED
JUL 31 2025
TIME
AUDITOR'S OFFICE
CERRO GORDO COUNTY, IA

Seeding cover oats to keep down weeds:	\$239.50
Mowing oats before fall:	\$200.00
Prairie seed:	\$1969.00
Planting late season seeding(estimate)	\$450.00
Repair two fences (estimate)	\$550.00
Total claim:	\$3,408.50

Jake Whitehurst
4392 290th St Clear Lake, IA 50428
Phone: 641-512-4490

DATE 7/10/2025

BILL TO	SHIP TO
Jan & Tom Lovell	Same as recipient

QUANTITY	DESCRIPTION	UNIT PRICE	TOTAL
3.2 ac	Seed Cover Oats	\$25.00	\$75.00
7 bags	Oat Seed		\$164.50

SUBTOTAL	0
----------	---

TOTAL DUE	\$239.50
-----------	----------

Thank you for your business!

Jake Whitehurst



SHOOTING STAR

NATIVE SEEDS

20740 County Road 33 • Spring Grove, MN 55974
(507) 498-3944 • info@shootingstarnativeseed.com

To: Tom Lovell

107 N. 4th St
Clear Lake, IA 50428
641-357-2111 Phone

tomlovell@ctel.com

Description: Custom IA CRP Seed Mix - WALT
Seeding Rate: 10.21 lb/acre (64.2 seeds/square foot)

Quote Number	LOVET2503
Quote Date	06/11/2025
Total Acres	3.20
Total lb	32.67
Price/Acre	\$615.00
Seed Total	\$1,968.00
Mix Fee	-
Shipping	-
Sales Tax	-
Grand Total	\$1,968.00

Common Name	Scientific Name	% of Mix	Seeds/ft ²	Total
Grasses				
Big Bluestem	Andropogon gerardii	23.66%	8.9	7.728 PLS lb
Little Bluestem	Schizachyrium scoparium	9.49%	5.3	3.101 PLS lb
Sideoats Grama	Bouteloua curtipendula	5.60%	1.3	1.830 PLS lb
Bluejoint Grass	Calamagrostis canadensis	0.07%	0.7	0.022 PLS lb
Canada Wild Rye	Elymus canadensis	6.51%	1.3	2.128 PLS lb
Virginia Wild Rye	Elymus virginicus	11.30%	1.8	3.692 PLS lb
Switchgrass	Panicum virgatum	0.50%	0.3	0.162 PLS lb
Indiangrass	Sorghastrum nutans	13.47%	6.1	4.400 PLS lb
Rough Dropseed	Sporobolus compositus	3.98%	4.5	1.301 PLS lb
Forbs				
Canada Anemone	Anemone canadensis	0.03%	0.0	0.011 PLS lb
Prairie Sage	Artemisia ludoviciana	0.03%	0.3	0.010 PLS lb
Swamp Milkweed	Asclepias incarnata	0.33%	0.1	0.109 PLS lb
Butterfly Milkweed	Asclepias tuberosa	0.31%	0.1	0.101 PLS lb
Sky Blue Aster	Symphotrichum oolentangiense	0.01%	0.0	0.002 PLS lb
Heath Aster	Symphotrichum ericoides	0.00%	0.0	0.000 PLS lb
Sky Blue Aster (sub)	Symphotrichum oolentangiense	0.02%	0.1	0.005 PLS lb
Smooth Blue Aster	Symphotrichum laeve	0.14%	0.3	0.044 PLS lb
New England Aster	Symphotrichum novae-angliae	0.03%	0.1	0.011 PLS lb
Canada Milkvetch	Astragalus canadensis	0.31%	0.2	0.102 PLS lb
White Wild Indigo	Baptisia alba	0.16%	0.0	0.051 PLS lb
Cream Wild Indigo	Baptisia bracteata	0.19%	0.0	0.062 PLS lb
Partridge Pea	Chamaecrista fasciculata	0.20%	0.0	0.065 PLS lb
Prairie Coreopsis	Coreopsis palmata	0.03%	0.0	0.009 PLS lb
Prairie Larkspur	Delphinium virescens	0.00%	0.0	0.000 PLS lb
Showy Goldenrod (sub)	Solidago speciosa	0.00%	0.0	0.001 PLS lb
Showy Tick Trefoil	Desmodium canadense	0.58%	0.1	0.190 PLS lb
Pale Purple Coneflower	Echinacea pallida	0.21%	0.0	0.067 PLS lb
Rattlesnake Master	Eryngium yuccifolium	7.97%	2.2	2.602 PLS lb
Tall Boneset	Eupatorium altissimum	0.02%	0.0	0.005 PLS lb
Joe Pye Weed	Eutrochium maculatum	0.02%	0.1	0.006 PLS lb
Boneset	Eupatorium perfoliatum	0.02%	0.1	0.005 PLS lb
Sweet Joe Pye Weed	Eutrochium purpureum	0.02%	0.0	0.006 PLS lb
Flowering Spurge	Euphorbia corollata	0.00%	0.0	0.000 PLS lb
Showy Tick Trefoil (sub)	Desmodium canadense	0.05%	0.0	0.016 PLS lb
Bottle Gentian	Gentiana andrewsii	0.00%	0.0	0.000 PLS lb
Cream Gentian (sub)	Gentiana flavida	0.01%	0.1	0.004 PLS lb
Cream Gentian	Gentiana flavida	0.61%	3.2	0.200 PLS lb
Sneezeweed	Helenium autumnale	0.02%	0.1	0.005 PLS lb
Sawtooth Sunflower	Helianthus grosseserratus	0.60%	0.3	0.197 PLS lb
Stiff Sunflower	Helianthus pauciflorus	0.13%	0.0	0.044 PLS lb
Ox-eye Sunflower	Heliopsis helianthoides	0.21%	0.1	0.069 PLS lb

Dotted St. John's Wort	Hypericum punctatum	0.00%	0.0	0.000 PLS lb
Great St. John's Wort (sub)	Hypericum ascyron	0.02%	0.1	0.006 PLS lb
Common Goldstar	Hypoxis hirsuta	0.00%	0.0	0.000 PLS lb
Gray Goldenrod (sub)	Solidago nemoralis	0.00%	0.0	0.000 PLS lb
Southern Blue Flag Iris	Iris virginica shrevei	0.27%	0.0	0.087 PLS lb
False Boneset	Brickellia eupatorioides	0.07%	0.1	0.022 PLS lb
Round-headed Bush Clover	Lespedeza capitata	0.13%	0.0	0.044 PLS lb
Rough Blazing Star	Liatris aspera	0.03%	0.0	0.011 PLS lb
Prairie Blazing Star	Liatris pycnostachya	0.15%	0.1	0.048 PLS lb
Michigan Lily	Litium michiganense	0.00%	0.0	0.000 PLS lb
Round-headed Bush Clover (sub)	Lespedeza capitata	0.03%	0.0	0.011 PLS lb
Cardinal Flower	Lobelia cardinalis	0.01%	0.1	0.002 PLS lb
Great Blue Lobelia	Lobelia siphilitica	0.01%	0.1	0.002 PLS lb
Prairie Loosestrife	Lysimachia quadriflora	0.00%	0.0	0.000 PLS lb
Sneezeweed	Helenium autumnale	0.17%	0.8	0.056 PLS lb
Winged Loosestrife	Lythrum alatum	0.00%	0.5	0.001 PLS lb
Wild Bergamot	Monarda fistulosa	0.26%	0.7	0.086 PLS lb
Wood Betony	Pedicularis canadensis	0.00%	0.0	0.000 PLS lb
Wild Bergamot (sub)	Monarda fistulosa	0.00%	0.0	0.001 PLS lb
White Prairie Clover	Dalea candida	0.15%	0.1	0.050 PLS lb
Purple Prairie Clover	Dalea purpurea	0.61%	0.4	0.198 PLS lb
Prairie Phlox	Phlox pilosa	0.00%	0.0	0.000 PLS lb
Golden Alexanders (sub)	Zizia aurea	0.02%	0.0	0.008 PLS lb
Prairie Cinquefoil	Drymocallis arguta	0.07%	0.6	0.022 PLS lb
Scurfy Pea	Psoralea tenuiflora	0.00%	0.0	0.000 PLS lb
White Wild Indigo (sub)	Baptisia alba	0.16%	0.0	0.051 PLS lb
Virginia Mountain Mint	Pycnanthemum virginianum	0.20%	1.6	0.064 PLS lb
Yellow Coneflower	Ratibida pinnata	2.55%	2.9	0.833 PLS lb
Black-eyed Susan	Rudbeckia hirta	0.61%	2.1	0.200 PLS lb
Cutleaf Coneflower	Rudbeckia laciniata	0.02%	0.0	0.006 PLS lb
Sweet Black-eyed Susan	Rudbeckia subtomentosa	0.07%	0.1	0.022 PLS lb
Prairie Ragwort	Senecio plattensis	0.00%	0.0	0.000 PLS lb
Smooth Blue Aster (sub)	Symphotrichum laeve	0.06%	0.1	0.021 PLS lb
Compass Plant	Silphium laciniatum	0.40%	0.0	0.132 PLS lb
Cup Plant	Silphium perfoliatum	0.19%	0.0	0.062 PLS lb
Prairie Blue-eyed Grass	Sisyrinchium campestre	0.00%	0.0	0.000 PLS lb
Hoary Vervain (sub)	Verbena stricta	0.07%	0.1	0.022 PLS lb
Grass-leaved Goldenrod	Euthamia graminifolia	0.01%	0.1	0.002 PLS lb
Gray Goldenrod	Solidago nemoralis	0.01%	0.1	0.002 PLS lb
Riddell's Goldenrod	Solidago riddellii	0.01%	0.0	0.004 PLS lb
Stiff Goldenrod	Solidago rigida	4.90%	7.5	1.600 PLS lb
Showy Goldenrod	Solidago speciosa	0.03%	0.1	0.011 PLS lb
Germander	Teucrium canadense	0.08%	0.1	0.026 PLS lb
Purple Meadow Rue	Thalictrum dasycarpum	0.15%	0.1	0.048 PLS lb
Prairie Spiderwort	Tradescantia bracteata	0.03%	0.0	0.009 PLS lb
Blue Vervain	Verbena hastata	0.03%	0.1	0.011 PLS lb
Hoary Vervain	Verbena stricta	0.03%	0.0	0.009 PLS lb
Common Ironweed	Vernonia fasciculata	0.20%	0.2	0.065 PLS lb
Culver's Root	Veronicastrum virginicum	0.25%	7.4	0.080 PLS lb
Prairie Violet	Viola pedatifida	0.00%	0.0	0.000 PLS lb
Ohio Spiderwort (sub)	Tradescantia ohiensis	0.03%	0.0	0.011 PLS lb
Golden Alexanders	Zizia aurea	0.73%	0.3	0.238 PLS lb
Heartleaf Alexanders	Zizia aptera	0.04%	0.0	0.015 PLS lb
Lead Plant	Amorpha canescens	0.03%	0.0	0.011 PLS lb
False Indigo	Amorpha fruticosa	0.07%	0.0	0.024 PLS lb
New Jersey Tea	Ceanothus americanus	0.00%	0.0	0.000 PLS lb
Red Root	Ceanothus herbaceus	0.00%	0.0	0.000 PLS lb
Prairie Wild Rose (sub)	Rosa arkansana	0.21%	0.0	0.070 PLS lb

Shipping and sales tax will be calculated at the time of order. The minimum order per individual species is \$10.00. A \$50.00 small mix fee will be added to mixes which cost less than \$250.00.

Substitutions may be necessary based on availability at the time of order. This quote is valid for 30 days. Thank you for your inquiry.



Real People. Real Solutions.

1609 US Hwy 18 East
Algona, IA 50511
Phone: (515) 395-3140
Bolton-Menk.com

July 14, 2025

Wunsch Construction, Inc.
110 East Traer St.
Greene, IA 50636

RE: Pay Application No. 3 - Final
Main Tile Repair
Cerro Gordo County Drainage District No. 1
Project No.: 0T7.131386

Dear Kirk:

Enclosed are three (3) copies of Pay Application No. 3 (final) for the above-referenced project in Cerro Gordo County Drainage District No. 1.

Please review the attached Pay Request. **If acceptable, please sign all copies and return all three (3) signed copies to this office.**

If you have any questions, please feel free to call.

Sincerely,




Bolton & Menk, Inc.

Tyler A. Conley, P.E.
Project Manager

Encl.

TAC/pnt

Contractor's Application for Payment

Owner: Cerro Gordo County Drainage District No. 1 Engineer: Bolton & Menk, Inc. Contractor: Wunsch Construction, Inc. Project: Main Tile Repair Contract: _____	Owner's Project No.: _____ Engineer's Project No.: 0T7.131386 Agency's Project No.: _____																																	
Application No.: 3 - Final Application Date: 05/22/25 Application Period: From 5/1/2025 to 5/15/2025																																		
<table style="width: 100%; border-collapse: collapse;"> <tr> <td style="width: 60%;">1. Original Contract Price</td> <td style="width: 10%; text-align: right;">\$</td> <td style="width: 30%; text-align: right;">276,146.00</td> </tr> <tr> <td>2. Net change by Change Orders</td> <td style="text-align: right;">\$</td> <td style="text-align: right;">301.34</td> </tr> <tr> <td>3. Current Contract Price (Line 1 + Line 2)</td> <td style="text-align: right;">\$</td> <td style="text-align: right;">276,447.34</td> </tr> <tr> <td>4. Total Work completed and materials stored to date (Sum of Column H Unit Price Total and Column M Stored Materials)</td> <td style="text-align: right;">\$</td> <td style="text-align: right;">276,447.34</td> </tr> <tr> <td>5. Retainage</td> <td></td> <td></td> </tr> <tr> <td> a. _____ X \$ 276,447.34 Work Completed</td> <td style="text-align: right;">\$</td> <td style="text-align: right;">-</td> </tr> <tr> <td> b. _____ X \$ _____ Stored Materials</td> <td style="text-align: right;">\$</td> <td style="text-align: right;">-</td> </tr> <tr> <td> c. Total Retainage (Line 5.a + Line 5.b)</td> <td style="text-align: right;">\$</td> <td style="text-align: right;">-</td> </tr> <tr> <td>6. Amount eligible to date (Line 4 - Line 5.c)</td> <td style="text-align: right;">\$</td> <td style="text-align: right;">276,447.34</td> </tr> <tr> <td>7. Less previous payments</td> <td style="text-align: right;">\$</td> <td style="text-align: right;">248,802.61</td> </tr> <tr> <td>8. Amount due this application</td> <td style="text-align: right;">\$</td> <td style="text-align: right;">27,644.73</td> </tr> </table>		1. Original Contract Price	\$	276,146.00	2. Net change by Change Orders	\$	301.34	3. Current Contract Price (Line 1 + Line 2)	\$	276,447.34	4. Total Work completed and materials stored to date (Sum of Column H Unit Price Total and Column M Stored Materials)	\$	276,447.34	5. Retainage			a. _____ X \$ 276,447.34 Work Completed	\$	-	b. _____ X \$ _____ Stored Materials	\$	-	c. Total Retainage (Line 5.a + Line 5.b)	\$	-	6. Amount eligible to date (Line 4 - Line 5.c)	\$	276,447.34	7. Less previous payments	\$	248,802.61	8. Amount due this application	\$	27,644.73
1. Original Contract Price	\$	276,146.00																																
2. Net change by Change Orders	\$	301.34																																
3. Current Contract Price (Line 1 + Line 2)	\$	276,447.34																																
4. Total Work completed and materials stored to date (Sum of Column H Unit Price Total and Column M Stored Materials)	\$	276,447.34																																
5. Retainage																																		
a. _____ X \$ 276,447.34 Work Completed	\$	-																																
b. _____ X \$ _____ Stored Materials	\$	-																																
c. Total Retainage (Line 5.a + Line 5.b)	\$	-																																
6. Amount eligible to date (Line 4 - Line 5.c)	\$	276,447.34																																
7. Less previous payments	\$	248,802.61																																
8. Amount due this application	\$	27,644.73																																
Certificate for Final Payment I hereby certify that, to the best of my knowledge and belief, all items quantities and prices of work and material shown on this Estimate are correct and that all work has been performed in full accordance with the terms and conditions of the Contract for this project between the Owner and the undersigned Contractor, and as amended by any authorized changes, and that the foregoing is a true and correct statement of the amount for the Final Estimate, that applicable provisions of the Iowa Administrative Code have been complied with and that all claims against me by reason of the Contract have been paid or satisfactorily secured.																																		
Contractor: Wunsch Construction, Inc.																																		
Signature: _____	Date: _____																																	
Name: Kirk Wunsch	Title: President																																	
<table style="width: 100%; border-collapse: collapse;"> <tr> <td style="width: 50%; vertical-align: top;"> Recommended by Engineer By:  Name: Tyler A. Conley, P.E. Title: Project Manager Date: 5/28/25 </td> <td style="width: 50%; vertical-align: top;"> Approved by Owner By: _____ Name: _____ Title: _____ Date: _____ </td> </tr> </table>		Recommended by Engineer By:  Name: Tyler A. Conley, P.E. Title: Project Manager Date: 5/28/25	Approved by Owner By: _____ Name: _____ Title: _____ Date: _____																															
Recommended by Engineer By:  Name: Tyler A. Conley, P.E. Title: Project Manager Date: 5/28/25	Approved by Owner By: _____ Name: _____ Title: _____ Date: _____																																	

Progress Estimate - Unit Price Work

Contractor's Application for Payment

Owner: Cerro Gordo County Drainage District No. 1

Engineer: Bolton & Menk, Inc.

Contractor: Wunsch Construction, Inc.

Project: Main Tile Repair

Contract:

Owner's Project No.:

Engineer's Project No.: 077.131386

Contractor's Project No.:

Agency's Project No.:

Application No.:		3 - Final	Application		From	5/1/2025	to	5/15/2025	Application Date:			5/22/2025
A	B	C	D	E	F	G	H	I	J	K	L	
Bid Item No.	Description	Item Quantity	Units	Contract Information		Value of Bid Item (C X E) (\$)	F1 Quantity Previous Estimate	F2 Value Previous Estimate	Work Completed		Balance to Finish (I - J) (\$)	
				Unit Price (\$)					Estimated Quantity Incorporated in the Work	Value of Work Completed to Date (E X G) (\$)		% of Value of Item (I / F) (%)
Original Contract												
101	Lateral Tile Connections, 10" Dia. or Smaller	4.00	EA		700.00	2,800.00	4.00	2,800.00	4.00	2,800.00	100%	
102	Lateral Tile Connections, 12" Dia. or Larger	-	EA		1,500.00	-	-	-	-	-	-	
103	24" Dia. R.C.P. Elbow Sections, Fabrication Only	9.00	EA		780.00	7,020.00	9.00	7,020.00	9.00	7,020.00	100%	
104	Spot Tile Exploration	19.00	HR		300.00	5,700.00	19.00	5,700.00	19.00	5,700.00	100%	
105	Trench Foundation Stone	160.44	TN		23.00	3,690.12	160.44	3,690.12	160.44	3,690.12	100%	
106	Drain Tile, Trenched, Class III R.C.P., 30" Dia.	402.00	LF		84.65	34,029.30	402.00	34,029.30	402.00	34,029.30	100%	
107	Drain Tile, Trenched, Class III R.C.P., 24" Dia.	1,780.00	LF		74.00	131,720.00	1,780.00	131,720.00	1,780.00	131,720.00	100%	
108	Drain Tile, Trenched, Class III R.C.P., 18" Dia.	267.00	LF		56.50	15,085.50	267.00	15,085.50	267.00	15,085.50	100%	
109	Drain Tile, Trenched, HOPE 8" Dia., Dual Wall	-	LF		35.25	-	-	-	-	-	-	
110	Crushed Tile in Place	2,418.00	LF		5.00	12,090.00	2,418.00	12,090.00	2,418.00	12,090.00	100%	
111	Fence Cuts	3.00	EA		300.00	900.00	3.00	900.00	3.00	900.00	100%	
112	Mobilization	1.00	LS		19,500.00	19,500.00	1.00	19,500.00	1.00	19,500.00	100%	
201	Drain Tile, Trenched, Class III R.C.P., 24" Dia.	96.00	LF		88.50	8,496.00	96.00	8,496.00	96.00	8,496.00	100%	
202	Traffic Control	1.00	LS		3,100.00	3,100.00	1.00	3,100.00	1.00	3,100.00	100%	
203	Safety Closures	2.00	EA		100.00	200.00	2.00	200.00	2.00	200.00	100%	
204	Seeding and Fertilization (Rural)	0.10	AC		35,000.00	3,500.00	0.10	3,500.00	0.10	3,500.00	100%	
205	Silt Fence, Installation and Removal	-	LF		2.00	-	-	-	-	-	-	
206	Modified Subbase, 6"	20.00	CY		50.00	1,000.00	20.00	1,000.00	20.00	1,000.00	100%	
207	Granular Shoulders, Type A	8.00	TN		50.00	400.00	8.00	400.00	8.00	400.00	100%	
208	Pavement Markings	0.30	STA		950.00	285.00	0.30	285.00	0.30	285.00	100%	
209	Pavement Removal	103.00	SY		10.00	1,030.00	103.00	1,030.00	103.00	1,030.00	100%	
210	Standard or Slip-Form PCC Pavement, Class 3 Durability, 8"	103.00	SY		102.50	10,557.50	103.00	10,557.50	103.00	10,557.50	100%	
211	Flowable Mortar	96.00	LF		62.50	6,000.00	96.00	6,000.00	96.00	6,000.00	100%	
212	Trench Foundation Testing	-	LS		1,000.00	-	-	-	-	-	-	
213	Mobilization	1.00	LS		3,100.00	3,100.00	1.00	3,100.00	1.00	3,100.00	100%	
CO1 - 113	Root Cutting Existing 24" HDPE Tile	-	LF		40.00	-	-	-	-	-	-	
CO4 - 114	Bike Trail Rock Resurfacing - Rock	8.04	TN		23.00	184.92	8.04	184.92	8.04	184.92	100%	
CO5 - 115	N12 24" Dual Wall	20.00	LF		28.20	564.00	20.00	564.00	20.00	564.00	100%	
CO5 - 116	24" Bands	2.00	EA		75.00	150.00	2.00	150.00	2.00	150.00	100%	
CO5 - 117	SUDAS Pipe Bedding	15.00	TN		23.00	345.00	15.00	345.00	15.00	345.00	100%	
CO5 - 118	Associated Labor for Change Order CO5 Items	1.00	LS		5,000.00	5,000.00	1.00	5,000.00	1.00	5,000.00	100%	
Original Contract + Approved Change Orders Total							\$	276,447.34	\$	276,447.34	100%	\$



PUBLIC HEALTH
healthier together

DATE: September 22, 2025

TO: Cerro Gordo County Board of Supervisors

CC: Michelle Rush, Assistant Zoning Administrator, Executive Assistant, Cerro Gordo County

FROM: Daniel Ries, Cerro Gordo County Department of Public Health

SUBJECT: Manure Management Plan for River Edge Farms LLC

This report is to make you aware of concerns regarding a Manure Management Plan Annual Update received by this office from **River Edge Farms, LLC** swine operation. This report is being submitted according to Resolution 2003-123 **A Resolution Adopting Policy for the Receipt, Review and Comment on Manure Management Plans Received by the Cerro Gordo County Board of Supervisors**. Within seven (7) days of receipt of the manure management plan the Environmental Service Manager shall review the Manure Management Plan and prepare a report to the Board of Supervisors detailing the issues to forward to the Iowa Department of Natural Resources.

The confinement operation is located at **2420 300th Street in Section 20 of Grant Township**. It consists of two buildings with below-building pits. The operation houses 4,992 hogs in the finish (market) stage and produces 2,186,496 gallons of manure annually. Twenty-three fields consisting of 2,466.95 acres are designated for manure application. Twelve fields totaling 1,345.21 acres are located in Cerro Gordo County. The Cerro Gordo County fields are in Sections 19, 20, 30, 31, 32, and 35 of Grant Township, Sections 22, 29, and 30 of Lincoln Township and Sections 2 and 3 of Clear Lake Township. The remaining fields are in Hancock County. **No changes have been made to the fields used for manure application.**

My main concerns with the plan are listed below:

- The north city limits of Clear Lake are about ¾ mile from the manure application area.
- The north city limits of Ventura are about two miles from the manure application area.
- There are many public use areas in close proximity to the manure application areas: Haugen Wildlife Area (adjacent to Hancock County field), Kuhn Wildlife Area (adjacent), Wild Goose Marsh (adjacent), Teal Basins (¾ mile), Sandpiper Hills (1½ miles), Winnebago Oxbow (1½ miles), Mallard Marsh (1½ miles), Prairie Pothole Wildlife Area (2 miles), Hansen Wildlife Area (½ mile), Otter Bend Wildlife Area (½ mile), King Fisher Hollow (one mile), Winter Garden Recreation Area (one mile), Clear Lake Pond Wildlife Management Area (1½ miles), Donna Walker Nature Area (1¼ mile) and Grant Township Cemetery (1½ miles).
- Oakridge 1st Addition and Oak Hills Country Estates Subdivisions are about 1½ miles from the manure application area.
- The Winnebago River, a tributary from the south, a tributary from the north, and their collective flood plains abut the manure application area.
- Willow Creek and its floodplain are adjacent and encroach into the field in Section 35 of Grant Township and Section 2 of Clear Lake Township.
- Waterways meander through the fields in Sections 20 and 30 of Grant Township.
- A field in Hancock County contains HEL (highly erodible land).

If you have any questions regarding this information, feel free to contact this office at (641) 421-9338 or dries@cghealth.com.

