



CH S36 MALLARD AVE.

24

19

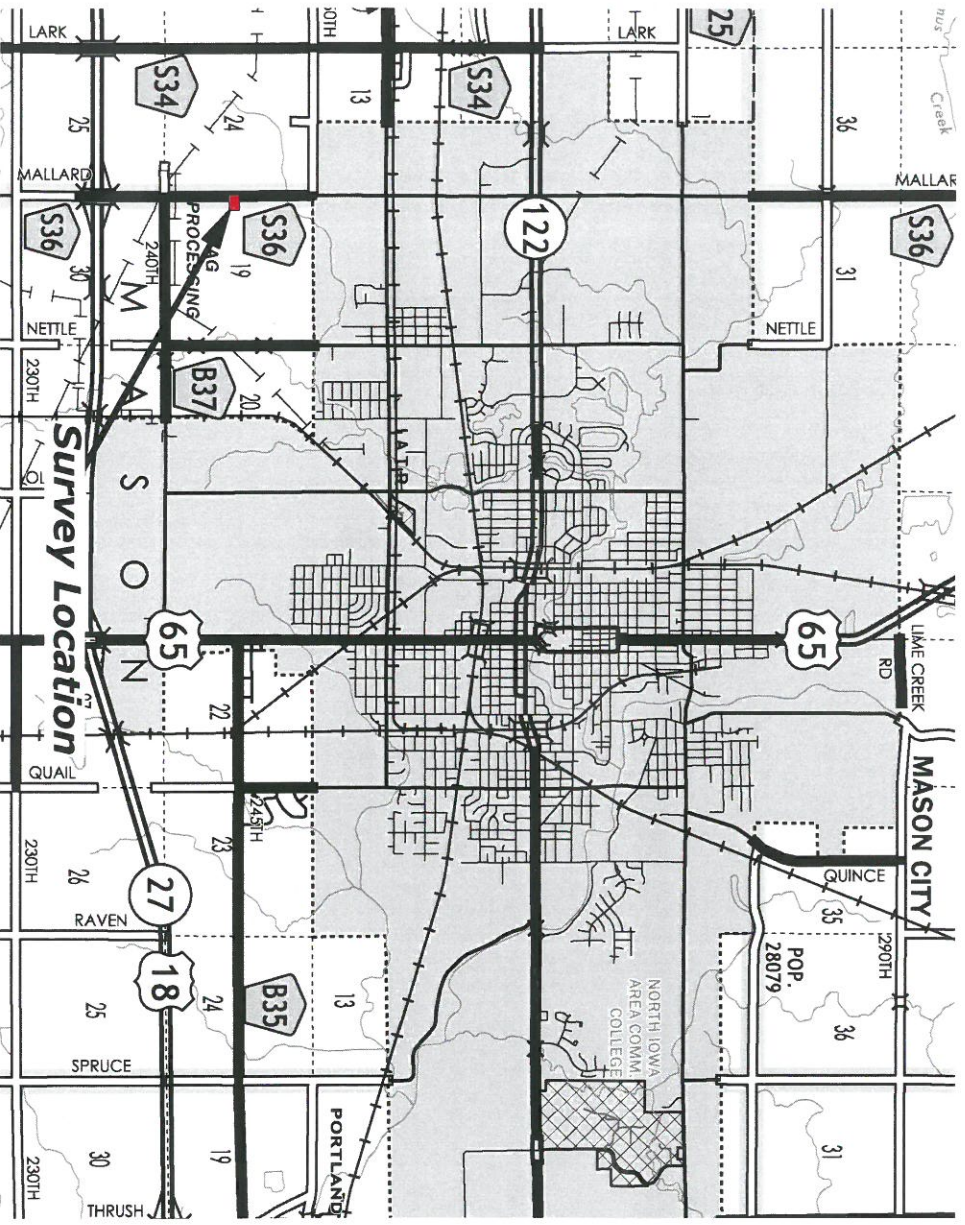


**Index Legend**

Prepared by & Returned to: Mark D. McClenathan, PLS 24510
HRS, LLC - 10 East Main Street, New Hampton IA 50659
County: Cerro Gordo
Section: 19
Township: T96N
Range: R20W
Alliquot Part: Fr'1 NW 1/4 - SW 1/4
Proprietor: Suzanne Z. Hofstrand
Requested By: Suzanne Hofstrand

Retracement Plat of Survey

**Retracement of Parcel A, as recorded in Document #02-10127,  
in the Fr'1 NW 1/4 - SW 1/4 of  
Section 19 - T96N - R20W, Cerro Gordo County, Iowa.**



**Map Not to Scale**  
Map Courtesy of the Iowa Department of Transportation  
<http://www.iowadot.gov/maps/>

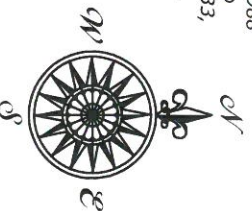
**Basis of Bearing:**

The Coordinate Basis for this survey and the subsequent Basis of Bearing is the Iowa State Plane Coordinate System North Zone (1401) Horizontal Control NAD 83 (1996), Vertical Control NAVD88 (Geoid 96C) Control was acquired by localizing into the Cerro Gordo County GPS Control System utilizing Points 131, 132, 133, 140, 141, 142, 145, 146, 147 and projected from Point 141. Scale factor 1.00007348 applied.

Projection Point:  
Northing = 3,873,452.634'  
Easting = 5,000,848.773'

**Notes:**

See Sheet 2 for Retracement Details.



**LEGEND**

▲	= Section Corner Found
○	= Set 5/8"Ø Rebar w/BPC PLS 24510
X	= Placed Cut "X"
●	= Fd. T-Bar w/Stainless Steel Cap PLS 13644
—	= Survey Boundary Line
— (0.00')	= Recorded Dimension

Survey was completed on May 14, 2018.

FB: Cerro Gordo I, Pg. 39

MDM Project Number: 2018-073

Sheet: 1



**Harold Reicks Surveying**  
10 East Main Street  
New Hampton IA 50659  
641-394-2725  
www.hrsurveying.com

2206 East Bremer Avenue  
Waverly IA 50677  
319-483-5187



I hereby certify that this land surveying document was prepared and the related survey work was performed by me or under my direct personal supervision and that I am a duly licensed Land Surveyor under the laws of the State of Iowa.

Mark D. McClenathan Date: 5-22-18

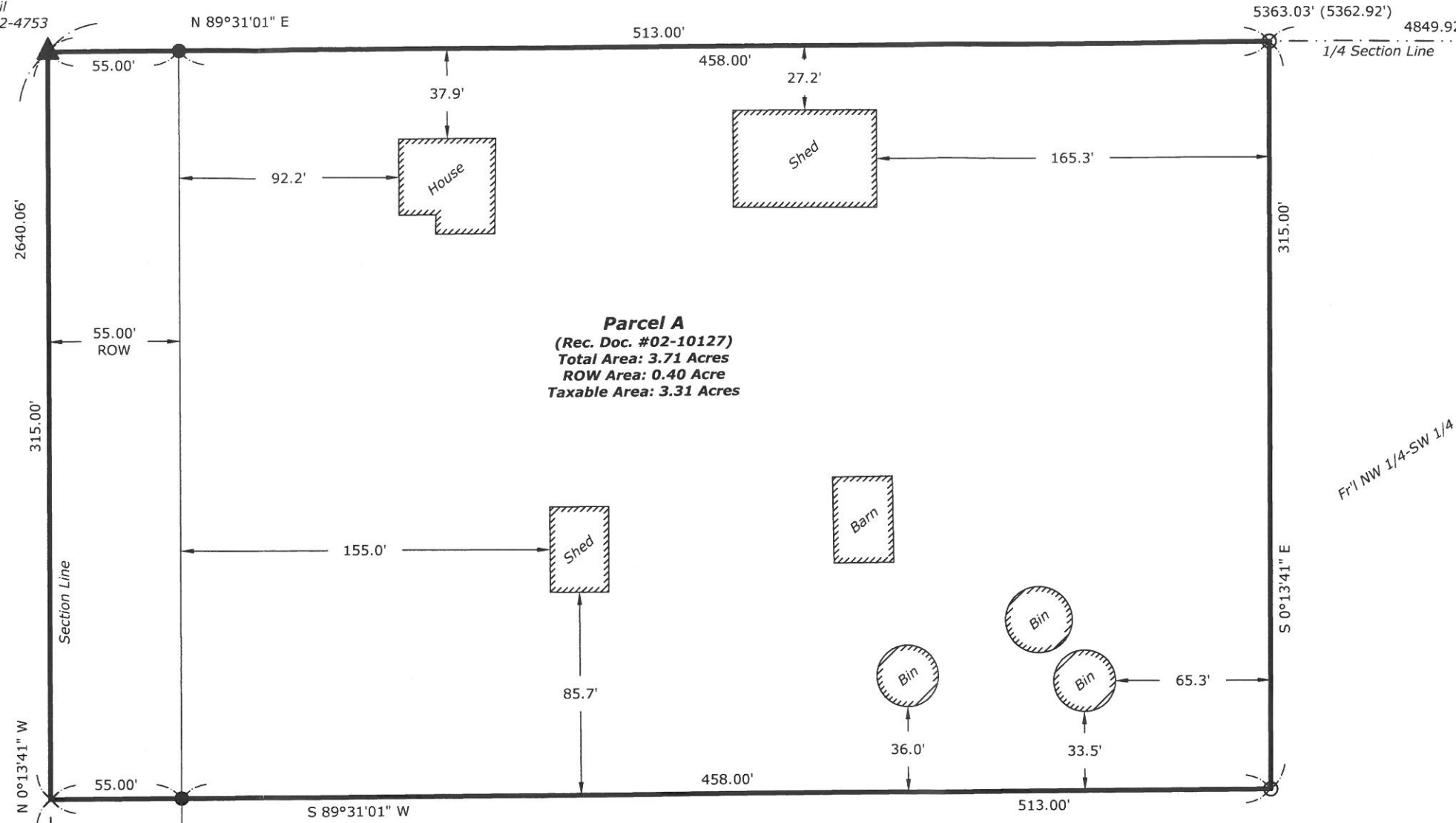
License number 24510  
My license renewal date is December 31, 2019.  
Sheets covered by this seal: 1-2

Retracement Plat of Survey

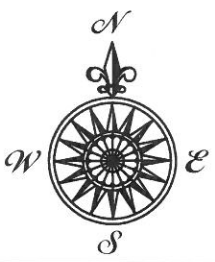
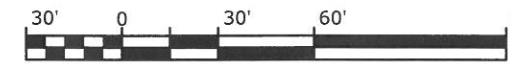
Retracement of Parcel A, as recorded in Document #02-10127, in the Fr'1 NW 1/4 - SW 1/4 of Section 19 - T96N - R20W, Cerro Gordo County, Iowa.

W 1/4 Corner  
Section 19-96-20  
Fd. PK Nail  
Rec. Doc. #2012-4753

E 1/4 Corner  
Section 19-96-20  
Fd. MAG Nail  
Rec. Doc. #2012-4757



**Parcel A**  
(Rec. Doc. #02-10127)  
Total Area: 3.71 Acres  
ROW Area: 0.40 Acre  
Taxable Area: 3.31 Acres





**Suzanne Hofstrand  
15471 Mallard Avenue**

***Figure 1***

Looking at the separation distance between the two eastern grain bins



June 27, 2018, J. Robbins