

**Case No. 20-05
Jesse Petersen (18749 150th Street)**

Figure 1

Looking at the proposed site



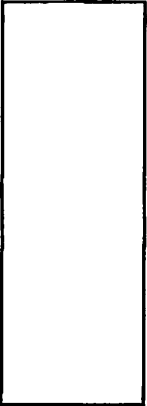
July 17, 2019, J. Robbins

Figure 2

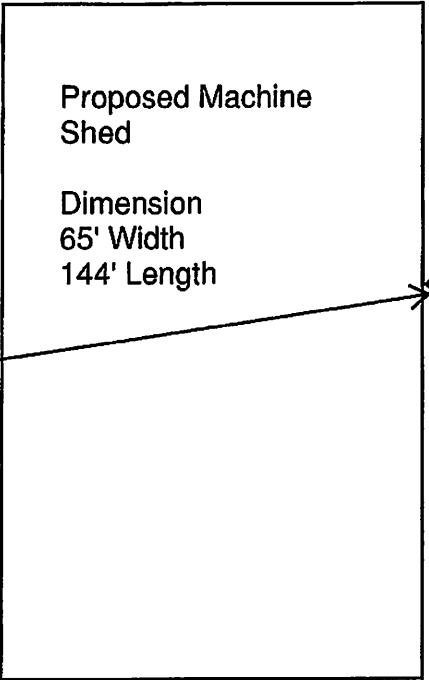
Looking south along the east side lot line



July 17, 2019, J. Robbins



65'



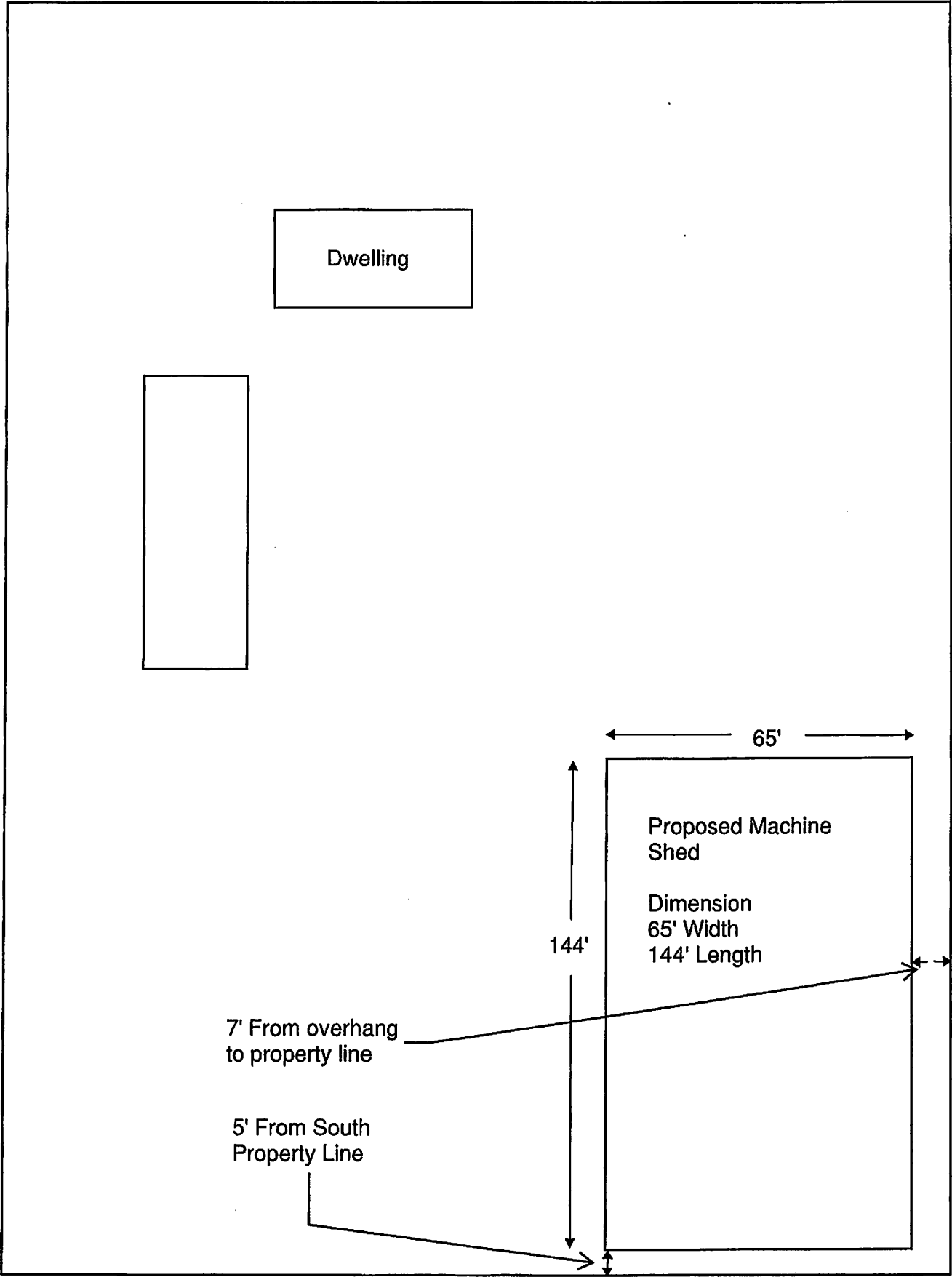
Proposed Machine Shed

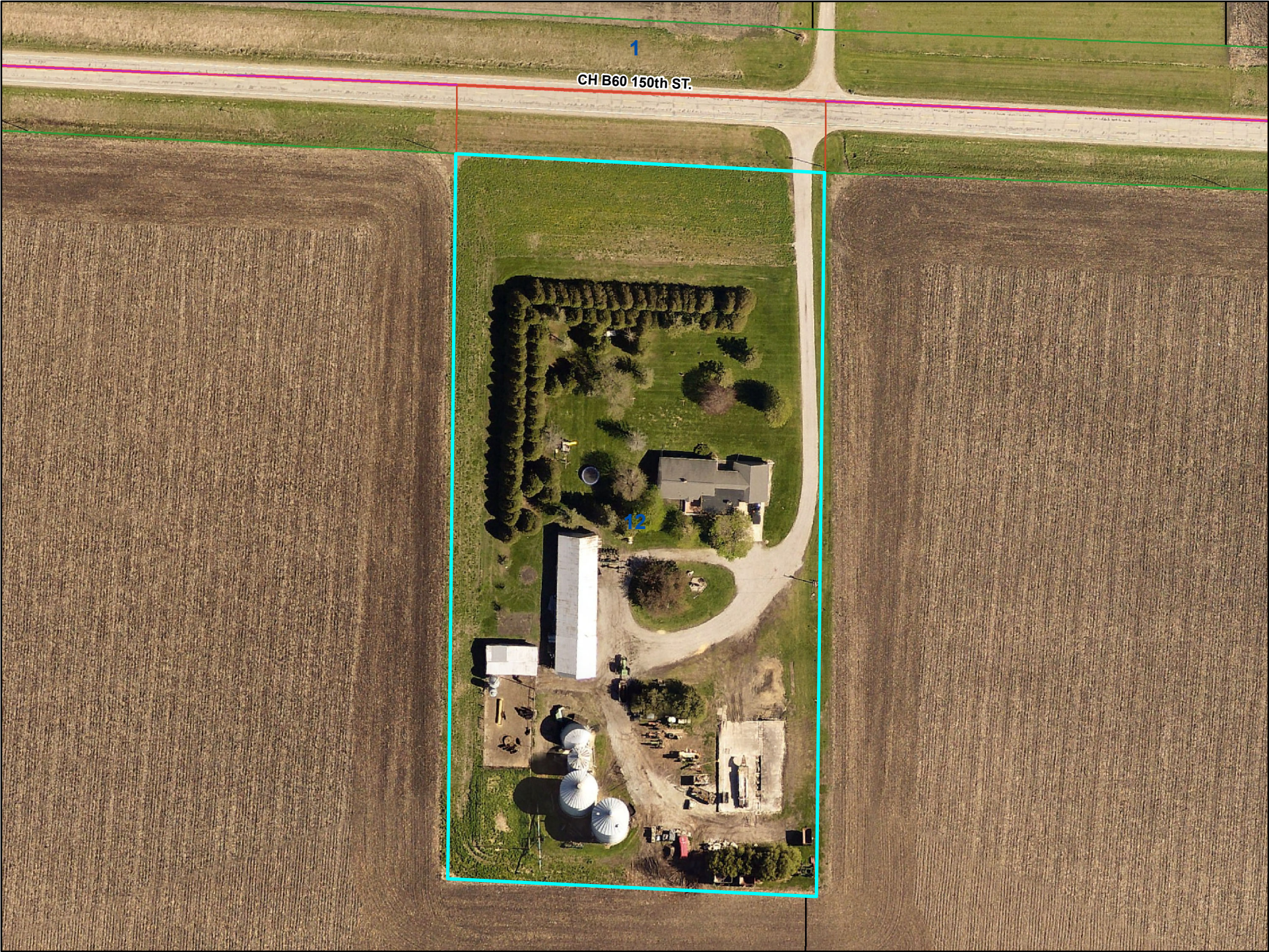
Dimension
65' Width
144' Length

144'

7' From overhang
to property line

5' From South
Property Line





CH B60 150th ST.

1

12